



OUTDOOR BBQ

MAESTRO - GRAPHITE

Part Number

552893

Month and Year of Manufacture: Aug 2016

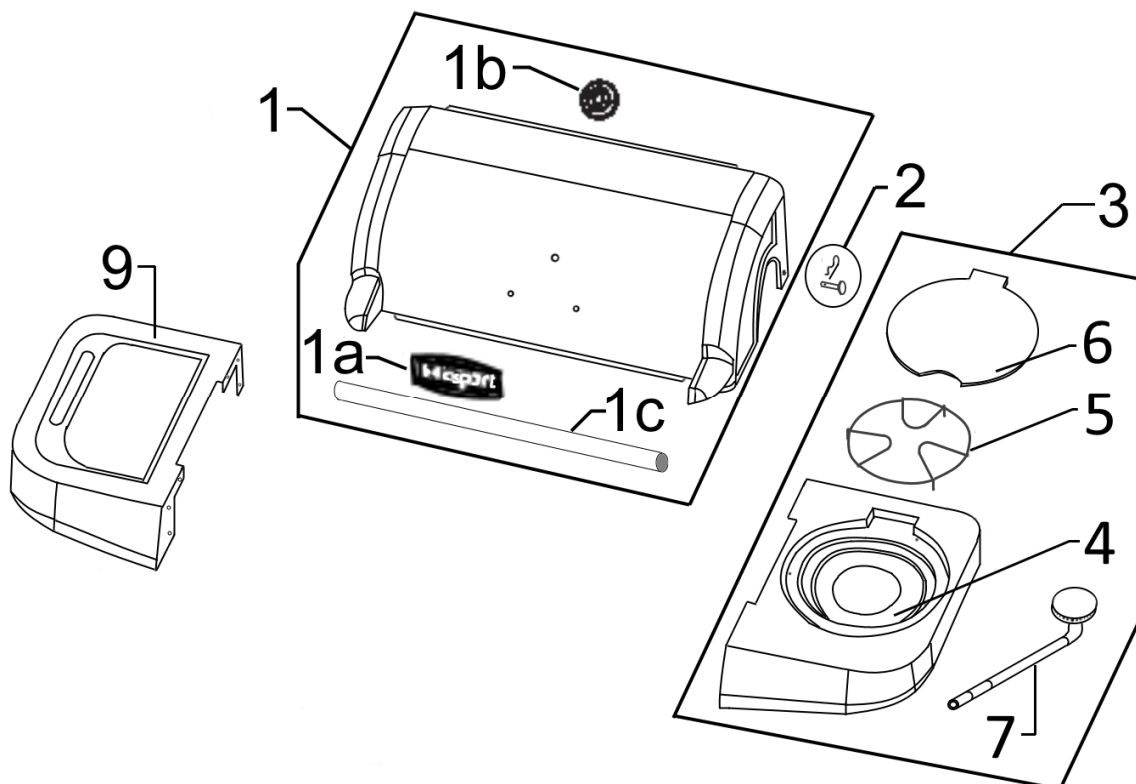
BBQ Dimensions:

Width 1460mm

Depth 650 mm

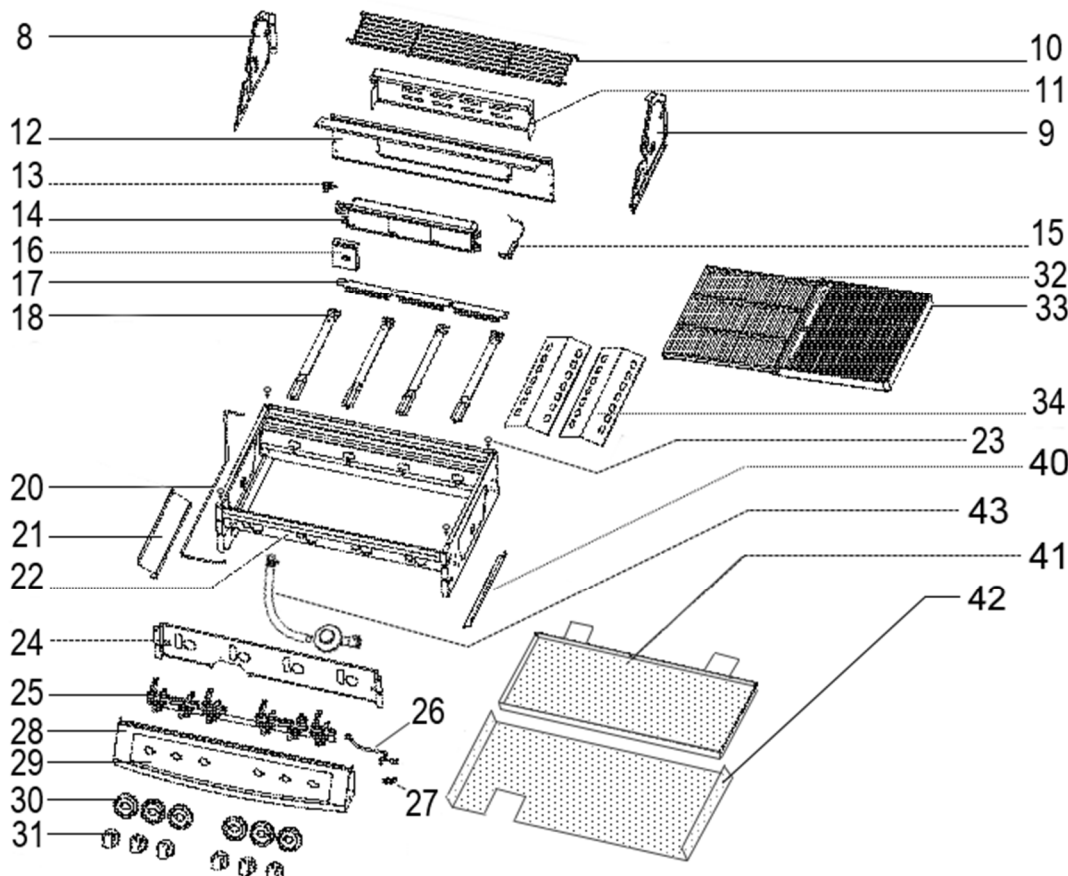
Height 1180mm





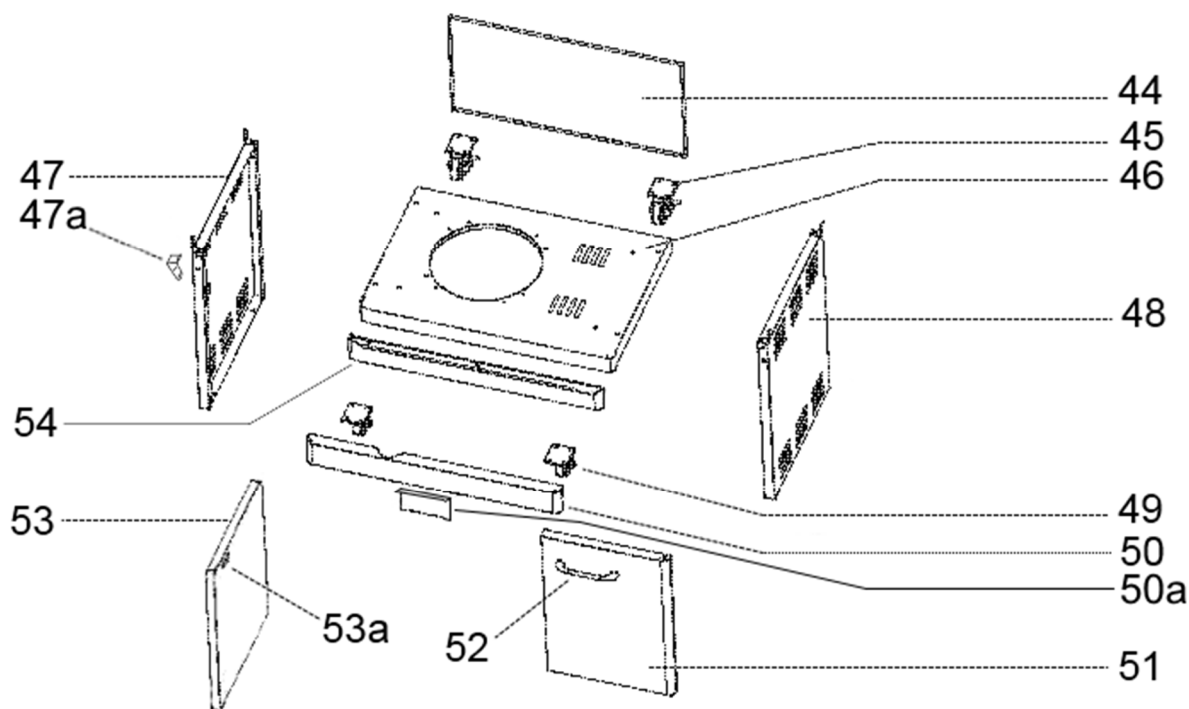
Item	Part #	Description	Qty	Not Illustrated		
1	547542	Hood Assembly, D/Gra-Black	1	559876	Bolt Pack	Maestro 1
1a	559827	*Badge- Masport	1	559885	Cover- BBQ, Hooded LS/4 Maestro	1
1b	547644	*Gauge- Temperature, 68dia Red/Blk	1	559823	Owner's Manual- BBQ L3/L4/M	1
1c	559985	*Handle- Hood	1	559923	Ignitor with Wire, S/Burner 670mm	1
2	559011	Pin-Hinge & R Clip 9.5 x 20	2	559975	Cover- Electrode, S/Burner	1
3	547582	Table- Side, RH (S/B)	1			
		(Includes items 559923, 559975)				
4	559972	*Bowl- Spillage, Side Burner	1			
5	559971	*Pan Support- Side Burner	1			
6	547587	*Lid- S/B, Round	D/Gra 1			
7	559870	*Burner-Side	S/S 1			
9	547581	Table- Side, LH	D/Gra 1			

When ordering spares: PLEASE QUOTE PART NUMBER & Description, NOT illustrated number. Item Qty = 1 per part unless stated differently.
BOLD TEXT = Assemblies. Text starting with * = items included in the assemblies & may not be available as a spares item.
Determine the left hand or right hand sides by standing in the operating position (standing at the handle).



Item	Part #	Description	Qty	Item	Part #	Description	Qty
8	547652	Panel- Side, LH Hood G/Body	1	31	559888	Knob BBQ, 7.9 Blk	6
9	547653	Panel- Side, RH Hood G/Body	1	32	559903	Grill- V/E Matt 350 x 450	1
10	559874	Warming Rack 700 x 155	1	33	559901	Plate- V/E Matt 350 x 450	1
11	559995	Panel- Rear Cover, Rear Burner	1	34	559875	Flame Tamer, 140x410 Slots	2
12	547656	Panel- Rear, RB Hood G/Body	1	40	559921	Fat- Deflector, RH	1
13	559998	Jet, Rear 1.02mm dia LPG BBQ	1	41	559899	Tray- Drip 720 x 330	1
14	559994	Burner- Rear	1	42	547659	Panel- Top, Trolley D/Gra	1
15	559997	Ignitor- Rear Burner	1	43	559968	Hose & Reg, POL (Aus)	1
16	559999	Cover- Wind, Rear Burner	1	Note , this BBQ is supplied with the above Hose & Regulator			
17	559922	Cross- Light S/S	3	Should this BBQ be sold in N-Z, replace with the below H&R			
18	559887	Burner- Tube, 400 x 0.8 304SS	4	43	546605	Hose & Reg, QCC (N-Z)	1
20	559996	Tube- Rear Burner	1	Not Illustrated			
21	559969	Deflector- Fat, LH/RB	1	547663	Panel- Rear, Insert G/Body L4/M	1	
22	559907	Grill Body- RB+4B PE	1	559970	Match Holder	1	
23	547664	Rubber Stopper, 15dia x 6mm	4	547101	Valve- Rear, LPG 1.02 INT IGN	1	
24	-----	Panel- Heat Shield, Front	1	559993	Valve- Main, LPG 0.94 INT IGN	4	
25	559926	Manifold- Assy (Int Ign) 4+RB	1	559974	Jet, 4B Main 0.94mm dia LPG BBQ	4	
(Includes items 547101, 559779, 974, 990, 993)				559990	Valve- Side, LPG 0.89 INT IGN	1	
26	559909	Pipe- Flexi, Side Burner	1	559779	Seal- Valve, Silicon	6	
27	559973	Jet, Side Burner 0.89dia	1				
28	547576	Dashboard, (Without Insert) D/Gra	1				
29	559824	Insert- Dashboard, Maestro	1				
30	559889	Bezel- Control Knob	6				



When ordering spares: PLEASE QUOTE PART NUMBER & Description, NOT illustrated number. Item Qty = 1 per part unless stated differently.
BOLD TEXT = Assemblies. Text starting with * = items included in the assemblies & may not be available as a spares item.
Determine the left hand or right hand sides by standing in the operating position (standing at the handle).



Item	Part #	Description	Qty
44	547580	Panel- Rear, Trolley	D/Gra 1
45	559880	Castor- Locking, Plate Mount	2
46	547579	Panel- Bottom, Trolley	D/Gra 1
47	547578	Panel- Side, LH Trolley	D/Gra 1
47a	548695	Bottle Opener	1
48	547639	Panel- Side, RH Trolley	D/Gra 1
49	559878	Castor- Plate Mount	2
50	547577	Door- Brace, Trolley Upper	D/Gra 1
50a	547651	*Bracket- Magnet, Door- Brace	1
51	547583	Door Assy RH- D/Gra-Alcoat	1
52	559882	*Handle Assembly- Door	1
53a	559976	Magnet- Door	2
53	547584	Door Assy LH- D/Gra-Alcoat	1
52	559882	*Handle Assembly- Door	1
54	547657	Door- Brace, Trolley Lower	D/Gra 1

When ordering spares: PLEASE QUOTE PART NUMBER & Description, NOT illustrated number. Item Qty = 1 per part unless stated differently.
BOLD TEXT = Assemblies. Text starting with * = items included in the assemblies & may not be available as a spares item.
 Determine the left hand or right hand sides by standing in the operating position (standing at the handle).

**DATA PLATE 559848.D.0**

Name	Model	AGA Approval	Gas Type	Injector (mm)	Pressure (kPa)	Inp/Burn (Mj/h)	Total (Mj/h)	
LIFESTYLE 4	CBA-401-A(CYB)	AGA7443	ULPG	BBQ	0.94	2.75	4 x 11.5	56.0
				S/B	0.89		1 x 10	
			NG	BBQ	1.5	1.13	4 x 11.5	56.0
				S/B	1.44		1 x 10	
MAESTRO	CBA-401B-B	AGA7443	ULPG	BBQ	0.94	2.75	4 x 11.5	68.2
				S/B	0.89		1 x 10	
				R/B	1.02		1 x 12.2	
			NG	BBQ	1.5	1.13	4 x 11.5	68.2
				S/B	1.44		1 x 10	
				R/B	1.75		1 x 12.2	
Gas Supply Pressure, ULPG			Gas Pressure, NG1.13kPa					
Min: 2.70kPa; Max: 3.45kPa								
Gas Type: ULPG & NG			Tested to: AS5263.0-2013 AS/NZS 5263.1.7-2016					
Minimum Clearance : From Top of BBQ: 1000mm, From Sides: 430mm, From Rear : 430mm								
Distributed by MASPORT LTD			<div></div> <p>Read the instructions before using the appliance</p> <p>USE OUTDOOR ONLY</p> <p>WARNING: Parts of this appliance may be very hot, keep young children away</p> <div><p>DO NOT REMOVE</p><p>AUSTRALIA AND NEW ZEALAND GAS SAFETY CERTIFICATION</p><p>Manufactured by: CADERO BBQ & Hardware Guangdong, PRC</p></div>					
MASPORT LIMITED 320 Ti Rakau Drive, East Tamaki, Auckland 2013, NZ PO Box 14349, Panmure Auckland 1471, NZ								
MASPORT AUSTRALIA PTY LIMITED 27 Commercial Drive Dandenong South Melbourne, Victoria 3175, Australia PO Box 533, Braeside, Victoria 3195, Australia								
For storage and cylinder exchange, disconnect hose at the cylinder only, do not disconnect hose from the appliance.								
SERIAL N°:								



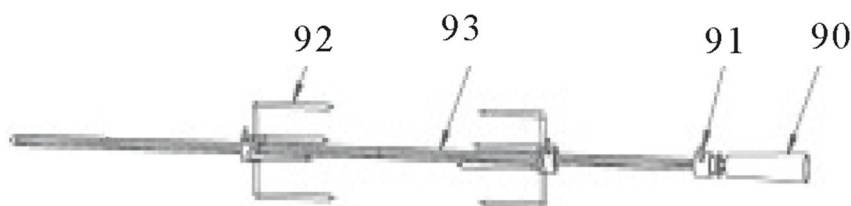
Optional Extras

546632 KIT- NG, Maestro 2020 1

(Kit includes all parts and full instructions)

Note, BBQ's with a serial number indicating it was built in 2020 or later have been N-G tested and can be fitted with the N-G option as indicated on the DATA PLATE

Serial Number example: 2020 - - - - -

552776 Rotisserie Set, 4/6B 820mm**547001 Bracket Location**

90	547008	Handle- Rotisserie Rod, M6	1
91	547005	Alignment Collar + Screw	1
92	547003	Prongs (each)	2
93	547004	Rod- Rotisserie 840mm	1
	547001	Bracket- (With Fasteners)	1
	547002	Collar-Alignment	1
	547006	Weight-Balance	1
	548554	Instruction Sheet	1
	559978	Motor- Rot' DC (Battery 2xD size)	1

Note, this Rotisserie Set is supplied with the above Motor 559978

There is a mains option as shown below

559977	Motor- Rot' SS AC	1
---------------	--------------------------	----------

